



# Pska Advanced Industries Limited

Engineered Power Solutions for Industrial Applications  
(Since 2013)



# ABOUT PSKA ADVANCED INDUSTRIES LIMITED

## ● Who We Are

PSKA Advanced Industries Limited is an ISO-certified Indian manufacturer specializing in electrical transformers, control panels, and power distribution solutions. Established in 2013, The company serve industrial, commercial, and infrastructure sectors across India.

### OUR CORE EXPERTISE

- Current & Potential Transformers (CT & PT)
- Electrical Control Panels & Panel Accessories
- Power Packs & Switching Power Supplies
- UPS, Inverters & Voltage Stabilizers
- Customized Electrical & Power Solutions

### WHY PSKA

- In-house manufacturing and testing facilities
- Custom-engineered solutions as per application requirements
- Compliance with national and international standards
- Skilled engineering and quality assurance team
- Consistent focus on reliability, safety, and performance

### OUR COMMITMENT

- On-time delivery
- Competitive pricing
- Customized solutions
- Long-term customer partnerships

### MANUFACTURING CAPABILITY

- Modern production infrastructure
- Qualified technical workforce
- Continuous training and quality improvement programs
- Strict inspection and process control systems

## ● QUALITY & COMPLIANCE

PSKA operates under a robust quality management system to ensure product consistency and performance.

### CERTIFICATIONS & STANDARDS

- ISO 9001:2015, ISO 14001:2015
- CE, UL, CPRI,
- RoHS, OHSAS 18001

All products undergo routine testing in a fully equipped laboratory in accordance with applicable international standards.

# ELECTRICAL TRANSFORMERS

PSKA manufactures a wide range of electrical transformers designed for reliable performance in industrial, commercial, and infrastructure applications. All transformers are engineered and tested to meet applicable national and international standards.

## TYPES OF TRANSFORMERS MANUFACTURED

- Power Transformers
- Distribution Transformers
- Control Transformers
- Instrument Transformers (CT / PT / VT)
- Isolation & Auto Transformers
- Welding & Furnace Transformers

## CONFIGURATIONS & SPECIAL PURPOSE TRANSFORMERS

- Step-Up & Step-Down Transformers
- Single-Phase & Three-Phase Transformers
- Auto Transformers & Zig-Zag Transformers
- Earthing Transformers & Furnace Transformers

## TECHNICAL RANGE

- Rating: Up to 50 kVA
- Input Voltage: Up to 1.1 kV
- Output Voltage: As per application
- Frequency: 50 / 60 Hz
- Cooling: Air / Oil (as applicable)

## STANDARDS & COMPLIANCE

- IS 1180, IS 2026, IS-11171, IS-3156,
- IEC 61558, IEC 60076
- UL 506 / UL 1561 (as applicable)
- CE, CPRI
- EN 61558, CSA C22.2 IEEE C57



# LINE CHOKES

PSKA manufactures line and output chokes engineered to limit current distortion, reduce harmonics, and protect electrical systems. Our chokes are designed for reliable performance in industrial power applications and are tested to meet applicable national and international standards.

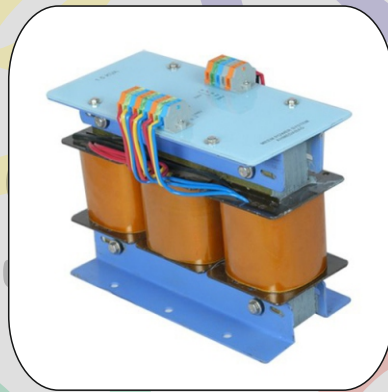
## TYPES OF CHOKES

## STANDARDS & COMPLIANCE

- Line Chokes
- Output Chokes
- DC & EMI Chokes
- Custom chokes as per application

- IS 5553, IS 3156, IS 2026
- IEC 60076, IEC 60289, IEC 61800-5-1
- UL 508 / UL 1446 (as applicable)
- EN 60289, IEEE C57

All chokes are designed, manufactured, and tested to ensure safety, performance, and long-term reliability.



## CURRENT TRANSFORMERS (CT)

PSKA manufactures tape-wound and resin-cast current transformers for metering and protection applications in industrial power systems. All CTs are engineered for accuracy, safety, and reliable long-term performance.

**Manufacturing Range**  
Tape-Wound CT: up to 3000 A  
Resin-Cast CT: up to 5000 A

**Compliance**  
IS 2705 · IEC 61869 · IEC 60044 · CE · CPRI (as applicable)



# LT DMC INSULATORS

PSKA manufactures a comprehensive range of DMC (Dough Moulding Compound) insulators designed for electrical insulation, mechanical strength, and long-term reliability in low-voltage and medium-voltage applications. Our DMC components are engineered for use in electrical panels, busbar systems, and industrial switchgear.

## PRODUCT RANGE

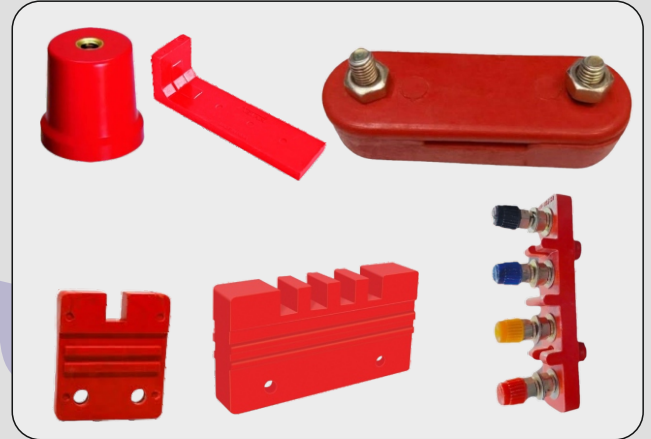
Conical Busbar Supports (6x30,8x40,10x50)

L-Type Busbar Supports (60,85,105,125,150)

DC Clip / Earthing Strip Insulators (25, 32, 40, 50 )

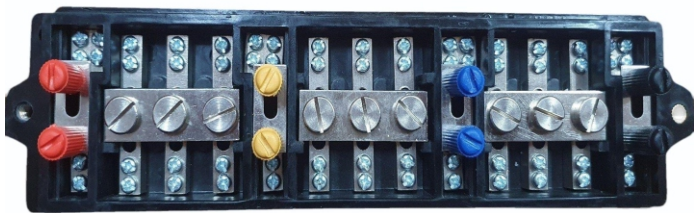
Finger Supports (1Way, 2Way, 3Way, 4Way, 5Way, 6Way)

Terminal Connector (63,100Amp)



## TEST TERMINAL BLOCK

### FRONT CONNECTED



### BACK CONNECTED



# PANEL & CABLING ACCESSORIES

PSKA offers a comprehensive range of electrical panel and cabling accessories sourced from reliable manufacturing partners, ensuring compatibility, quality, and dependable supply for industrial panel applications.

## NEUTRAL EARTHING BAR



CURRENT	PRODUCT CODE	SCREW SIZE	NUMBER OF WAYS	MOQ	CURRENT	PRODUCT CODE	SCREW SIZE	NUMBER OF WAYS	MOQ
16-32A	PNLB163205	M3	5	100	32A	PNLB3217	M4	17	50
16-32A	PNLB163207	M3	7	100	32A	PNLB3237	M4	37	50
16-32A	PNLB163209	M3	9	100	63A	PNLB6309	M5	9	50
16-32A	PNLB163213	M3	13	100	63A	PNLB6313	M5	13	50
16-32A	PNLB163217	M3	17	100	63A	PNLB6317	M5	17	50
32A	PNLB3205	M4	5	50	63A	PNLB6337	M5	37	50
32A	PNLB3207	M4	7	50	100A	PNLB10013	M6	13	20
32A	PNLB3209	M4	9	50	100A	PNLB10017	M6	17	20
32A	PNLB3213	M4	13	50	100A	PNLB10037	M6	37	20

## MARKING SLEEVE / FERRULING TUBE

S.No	CAT NO.	Size (Inner Dia)	Suitable For Wire Size	Length/ Roll (Mtrs.)
1	FT25	2.5 MM	UP-TO - 0.75 SQMM	100
2	FT32	3.2 MM	UP-TO -1.50 SQMM	100
3	FT35	3.5 MM	2.5 SQMM	100
4	FT42	4.2 MM	4.0 SQMM	100
5	FT52	5.2 MM	6.0 SQMM	100
6	FT55	5.5 MM	6.0 SQMM	100
7	FT60	6.0 MM	UP-TO - 10.00 SQMM	100

used for printing markers on all type Ferrule Printing of reputed makes.  
Performance  
Temperature Range :-20 Deg to +85 Deg  
Tensile Strength:-15.50 N/mm2

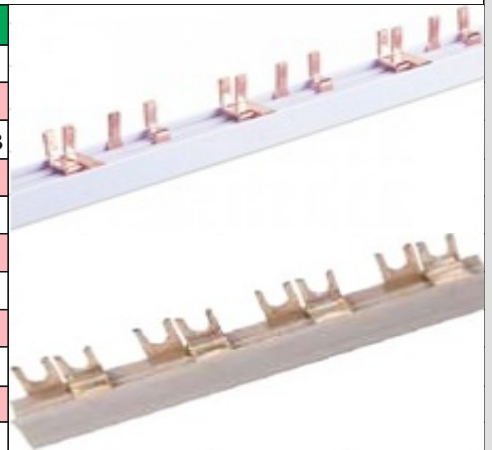
## EHI LUGS (Single & Twin)

S.N	Size (Sq.mm)	Part No. (Single)	Part No. (Double)	Colour
1	0.50	E0508	TE0508	White
2	0.75	E7508	TE7508	Grey
3	1.00	E1008	TE1008	Red
4	1.50	E1508	TE1508	Black
5	2.50	E2508	TE2508	Blue
6	4.00	E4009	TE4010	Grey
7	6.00	E6012	TE6012	Yellow
8	10.00	E1012	TE1012	Red
9	16.00	E1612	TE1612	Brown



## MCB Shorting / Combed Bus Bars

Contacts		Copper Shorting / Combed Bus Bars		
Insulation		PVC, Grey		
Max Current		63A		
No of Poles	Type	Part No	No Of MCB	No Of MCB
Single Poles	Pin	SP-P	57	50
Double Poles	Pin	DP-P	28	24
Triple Pole	Pin	TP-P	19	20
Four Pole	Pin	FP-P	14	12
Single Pole	U	SP-U	57	50
Double Pole	U	DP-U	28	24
Triple Pole	U	TP-U	19	20
Four Pole	U	FP-U	14	12



# Conduit Pipe And Fixing

Flexible Conduit Pipe					
S.No	Size	Inch	Id(mm)	OD(mm)	MOQ/Mtr
1	PG-7	1/4"	6.5	10.0	100
2	PG-9	3/8"	10.0	13.0	100
3	PG-11	1/2"	12.0	15.8	100
4	PG-13.5	1/2"	14.0	18.5	100
5	PG-16	3/4"	17.0	21.2	50
6	PG-21	1"	23.0	28.5	50
7	PG-29	1-1/4"	29.0	34.5	50
8	PG-36	1-1/2"	36.0	42.5	25
9	PG-48	2"	48.0	54.0	25

Conduit Gland (End Fitting)		
Size	UOM	MOQ
PG-7	Nos	200
PG-9	Nos	100
PG-11	Nos	100
PG-13.5	Nos	100
PG-16	Nos	100
PG-21	Nos	100
PG-29	Nos	50
PG-36	Nos	50
PG-48	Nos	50

Conduit Bracket			
Size	OD(mm)	UOM	MOQ/Mtr
PG-7	10.0	Nos	200
PG-9	13.0	Nos	100
PG-11	15.8	Nos	100
PG-13.5	18.5	Nos	100
PG-16	21.2	Nos	100
PG-21	28.5	Nos	100
PG-29	34.5	Nos	50
PG-36		Nos	50
PG-48		Nos	50



## CABLE TIE

S.N	Size (mm)	Part No	Width (mm)
1	100	CT10025	2.5
2	150	CT15036	3.6
3	200	CT20036	3.6
4	250	CT25036	3.6
5	300	CT30036	3.6



S.N	Size (mm)	Part No	Width (mm)
6	350	CT23036	3.6
7	350	CT35048	4.8
8	400	CT40048	4.8
9	450	CT45048	4.8

## CABLE GLANDS WITH LOCK NUT

S.N	Size	Cable Dia
1	PG-7	3-6.5 mm
2	PG-9	4-8 mm
3	PG-11	5-10 mm
4	PG-13.5	6-12 mm
5	PG-16	10-14 mm
6	PG-19	12-15 mm
7	PG-21	13-18 mm
8	PG-25	16-21 mm
9	PG-29	18-25 mm
10	PG-36	22-32 mm
11	PG-42	28-38 mm



S.N	Size	Cable Dia
12	PG-48	35-45 mm
13	PG-63	42-50 mm
14	M-12	3-6 mm
15	M-16	5-10 mm
16	M-20	8-13 mm
17	M-25	11-17 mm
18	M-32	15-21 mm
19	M-40	19-28 mm
20	M-50	25-35 mm
21	M-63	35-45 mm

## CABLE TIE MOUNTS

Size (MM)	Part No.
19X19	CTM1919
25X25	CTM2525



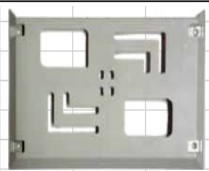
## SPIRAL WIRE SLEEVES

Size (mm)	Part No.	Length/Roll (Mtrs)
3.0	SWS3	50
6.0	SWS6	30
9.0	SWS9	20
12.0	SWS12	25



## Drawing Pocket

Part No	Dp01
UOM	Nos
Size	298.23 x 149 mm
Colour	Gray
MOQ	5 Nos
Remark	Unique Design with provision of horizontal placement of A4 papers



## Grommets Rubber Black Color

PART NO	Size	Standard Pac. NOS
GR16	16	200
GR19	19	200
GR22	22	200
GR25	25	100
GR32	32	100
GR38	38	100
GR50	50	100
GR62	62	100
GR80	80	100



## Neutral Link

Body	ENGINEERING GRADE Thermoplastic	
Current Capacity	32A	63A
Part No	PSNL32	PSNL63
Colour		Black
Contact Parts		Brass
MOQ	50	30



## LT HEAT SHRINKABLE BUS BAR SLEEVES

S.No	Lay Flat	Suitable For Bus Bar (Size in mm)
1	BBS20	12X3, 10X6
2	BBS25	15X3, 12X6
3	BBS30	20X3, 18X6, 16X3
4	BBS35	25X3, 20X6
5	BBS41	25X6, 25X6
6	BBS48	30X10, 30X6, 25X12
7	BBS55	38X6, 30X12
8	BBS61	40X10, 40X6, 38X9, 38X12
9	BBS72	50X6
10	BBS81	50X12, 50X10
	Note	



S.No	Lay Flat	Suitable For Bus Bar (Size in mm)
11	BBS93	75X6
12	BBS103	75X12
13	BBS110	90X2, 90X6
14	BBS128	100X9, 100X6
15	BBS140	100X12
16	BBS150	
17	BBS170	125X10, 125X6
18	BBS190	150X12, 150X10, 150X6
19	BBS210	175X12, 175X10, 175X6
20	BBS230	200X12

Material - PVC	Dielectric Strength -20KV/mm
Shrinkage Temperature -150-170 Deg For 4-50Mins	Standard Length - 50 Mtr Per Roll
Thickness-160-180 Microns	Standard Colors - Red, Yellow, Blue, Black & Green

## Meter Window Glass

### Screw

Pre- fitted "Sponge Rubber Gasket" in the meter glass, saves fitment time

### Snap / Press Fit

Saves Labor time - No drilling & fixing screws.  
Polycarbonate reduces the probability of Breakage during the transit.  
UV Stabilized Polycarbonate material makes more transparent & insurgents to any weather conditions.



UOM:- Nos  
SIZE:- 92 x 92mm  
Colour:- Crystal CLEAR TRANSPARENT  
MOQ:- 20 Nos

### Panel LED Indicator Light

PART No	PLI22-230
Dia	22mm
Operating Volt	230 Volt
Colour	Red, Yellow, Blue, Green



### PVC Wire Sleeve

ALL PRODUCTS IN THIS LIST ARE ROHS3

PART NO	Size	Suitable for	Length	Std.Packing
	Sq.mm	Wire/Cable(Sq.mm)	(Mtr/Roll)	Per Box
PWS015	1.50	0.25	30	20
PWS020	2.00	0.50	30	20
PWS025	2.50	0.75	30	20
PWS030	3.00	1.00	30	20
PWS035	3.50	1.50	30	20
PWS040	4.00	2.50	30	20
PWS050	5.00	4.00	30	20
PWS060	6.00	6.00	30	20
PWS080	8.00	10.00	30	20
PWS090	9.00	16.00	30	20
PWS100	10.00	25.00	30	10
PWS120	12.00	35.00	30	10
PWS140	14.00	50.00	30	10
PWS160	16.00	90.00	30	10

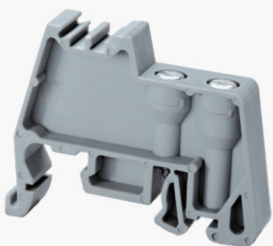


### Brass Metal Gland

SINGLE COMPRESSION (HEAVY DUTY (SIBG TYPE))		DOUBLE COMPRESSION WEATHER PROOF TYPE	
SIZE CODE	Entry Thred Size (INCH)	SIZE CODE	Entry Thred Size (INCH)
1616	5/8"	WP-001	3/4"
1619	3/4"	WP-01	3/4"
2119	3/4"	WP-1	3/4"
2125	1"	WP-2	1"
2925	1"	WP-3	1"
2932	1 1/4"	WP-4	1"
2938	1 1/2"	WP-5	1 1/4"
3638	1 1/2"	WP-6	1 1/2"
4251	2"	WP-7	1 1/2"
5451	2"	WP-8	2"
5463	2 1/2"	WP-9	2"
6063	2 1/2"	WP-10	2"
6675	3"	WP-10A	2 1/2"
7882	3 1/4"	WP-11	2 1/2"
		WP-12	3"
		WP-13	3- 1/4"



## STOPPER PA 702



## Door Limit Switch



## ANGEL BRACKET PA603



**DIN RAIL/MCB CHANNEL 35/7.5mm**



**PANEL HEATER 60W & 100 W**



**PLASTIC DOOR HANDLE**



**PLASTIC KNOB**



**Toggle Switch**



**VOLTMETER**



**INDUSTRIAL HOOTER Range 50 Mtr.**



**SINGLE PHASE PREVENTER**



**AMPERE METER**



**ROTARY SWITCHES**



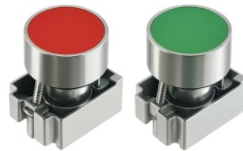
**PANEL LIGHT 5W/7WATT**



**EMERGENCY PUSH**



**PUSH BUTTON**



**NO NC CONTACT**



**SELECTOR SWITCH**



**PUSH BUTTON STATION**



**PUSH BUTTON LEGEND**



**DANGER PLATE**



**FOOT SWITCH**



**PLUG & SOCKET METAL BOX**



**ANNUNCIATOR**



**MCB PLASTIC BOX**



**RUBBER GASKET**



**PANNEL GASKIT**



**Excel Fan**



**CONNECTION BOX**



**WELDING MACHINE**



**BLIND RIVET**



**SELF DRILLING**



**DRAG CHAIN**



# EARTHING & LIGHTNING PROTECTION

PSKA offers a complete range of earthing and lightning protection components designed to provide safe dissipation of fault and lightning currents. The range supports reliable grounding solutions for industrial, commercial, and infrastructure applications.

## PRODUCT RANGE

### Earthing Electrodes

- GI Earthing Electrodes
- Copper Bonded Earthing Electrodes
- Pure Copper Earthing Electrodes

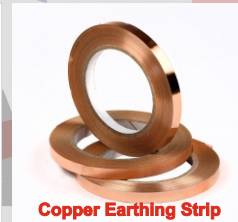
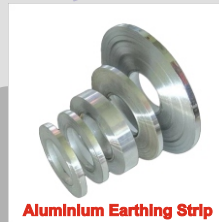
### Lightning Protection Components

- Copper / GI Lightning Arresters
- Down Conductors & Clamps
- Lightning Strike Counters

### Earthing Accessories

- Earthing Rods & Strips
- Inspection Chambers
- Earth Enhancement / Backfill Compounds

## PRODUCT IMAGES



Part No	Dia of Electrode (mm)	Connection Terminal(mm)	Inner pipe Size(mm)
<b>GI Earthing Electrode(Pipe In Pipe)</b>			
GIEE-PP-48	48	32X6X100	25
GIEE-PP-58	58	40X6X100	25
GIEE-PP-76	76	50X6X100	40
GIEE-PP-88	88	50X6X100	40

<b>Copper Bonded Rod</b>			
Part No	Dia Of Rod (mm)	Connection Terminal (mm)	Copper Plating Micron
CBR14	14.2	32x6x100	250
CBR16	16.2	32x6x100	250
CBR17	17.2	32x6x100	250
CBR19	19.2	32x6x100	250
CBR23	23.2	32x6x100	250
CBR25	25.2	32x6x100	250

<b>GI Earthing Electrode(Strip In Pipe)</b>			
GIEE-SP-48	48	32X6X100	25x3
GIEE-SP-58	58	40X6X100	25x3
GIEE-SP-76	76	50X6X100	40x6
GIEE-SP-88	88	50X6X100	40x6

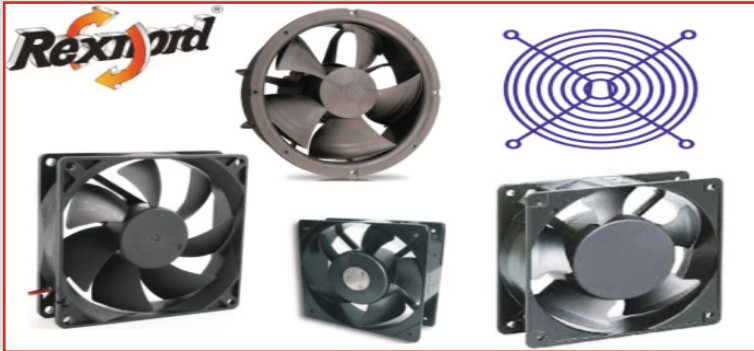
<b>Pure Copper Earthing Electrode</b>			
PCEE-SP-48	48	32X6X100	25x3
PCEE-SP-58	58	40X6X100	25x3
PCEE-SP-76	76	50X6X100	25x6
PCEE-SP-88	88	50X6X100	25x6

<b>Copper Terminal Earthing Electrode</b>			
CTEE-SP-48	48	32X6X100	25x3
CTEE-SP-58	58	40X6X100	25x3
CTEE-SP-76	76	50X6X100	25x6
CTEE-SP-88	88	50X6X100	25x6

<b>Copper Bonded Earthing Electrode</b>			
CBEE-SP-48	48	32X6X100	25x3
CBEE-SP-58	58	40X6X100	25x3
CBEE-SP-76	76	50X6X100	25x6
CBEE-SP-88	88	50X6X100	25x6



we are authorised channel partner of



Deals in Other Brands:-



BCH





**Corporate Office:**

C-367, IFC Ghazipur, Mayur Vihar Phase-3  
East Delhi – 110096, India

**Registered Office:**

C-571, Ved Vyas Puri, Sector-1  
Meerut – 250002, Uttar Pradesh

**Email:** sales@pska.org.in  
info@pska.org.in

**Phone:**+91-75796-98555



<https://pska.org.in>



@pska.ail

